

RESOLUTION 2024 0362

BEFORE THE BOARD OF COMMISSIONERS OF BENTON COUNTY, WASHINGTON

IN THE MATTER OF COUNTY PLANNING RE: A COMPREHENSIVE PLAN AMENDMENT APPLICATION, CPA 2024-002, BY SPINK ENGINEERING FOR THE CITY OF BENTON CITY TO MODIFY THE LAND USE DESIGNATION OF TWO (2) PARCELS FROM RURAL INDUSTRIAL TO PUBLIC AND RURAL REMOTE AND AMEND APPENDIX A - MAP FOLIO, FIGURE 5 – 2017 PERIODIC UPDATE LAND USE DESIGNATION MAP TO REFLECT THESE CHANGES.

WHEREAS, Benton County adopted its current Comprehensive Plan in 2018 with the completion of its required periodic update process; and

WHEREAS, pursuant to RCW 36.70A.106, Benton County provided notice of intent to the Washington State Department of Commerce to adopt a proposed comprehensive plan amendment under the Growth Management Act; and

WHEREAS, the Benton County Planning Commission conducted an Open Record Hearing for CPA 2024-002 on April 9, 2024 to consider the application by Spink Engineering and considered all evidence and testimony submitted at the public hearing and after discussion, voted to forward the proposed amendment to the Board of County Commissioners with a positive recommendation; and

WHEREAS, the Planning Commission recommendation of approval is set forth in the Planning Commission's Recommendation, Findings of Fact and Conclusions incorporated hereby by reference (BCCM 1.3), that are found in File # CPA 2024-002, located in the Planning Division; and

WHEREAS, notice of Open Record Hearing before the Board of County Commissioners was published in the Prosser Record Bulletin on May 1, 2024; put on the County website and sent to the applicants and interested parties on April 24, 2024, as noted in the file maintained in the Planning Division, and

WHEREAS, the Board of County Commissioners conducted an Open Record Hearing on Tuesday, May 14, 2024, at 9:00 a.m. in the Commissioners Hearing Room, Benton County Administration building, 7122 W. Okanogan Place, Building E, 3rd floor Ste. 330, Kennewick, Washington to consider the above proposed application for a comprehensive plan amendment; and

WHEREAS, after consideration of the above-mentioned request and review of the Planning Commission record, staff recommendations, and all written and oral comments submitted at the public hearing, the Board of County Commissioners adopted the Planning Commission's Findings of Fact as their own and it appears to be in the best interest of the public to approve application CPA 2024-002 **NOW, THEREFORE**,

BE IT RESOLVED, the Board of Benton County Commissioners, Benton County, Washington hereby approves the Comprehensive Plan Amendment application CPA 2024-002, amending the land use designation of two parcels from a current designation of Rural Industrial to a designation Public for parcel 113964011991002 and to Rural Remote for parcel 1113964011991001 and amending Appendix A – Map Folio Figure 5 - 2017 Periodic Update Land Use Designations Map (BCCM 1.3) to reflect these changes is hereby approved.

Dated this 14th day of May, 2024.



Chairman of the Board



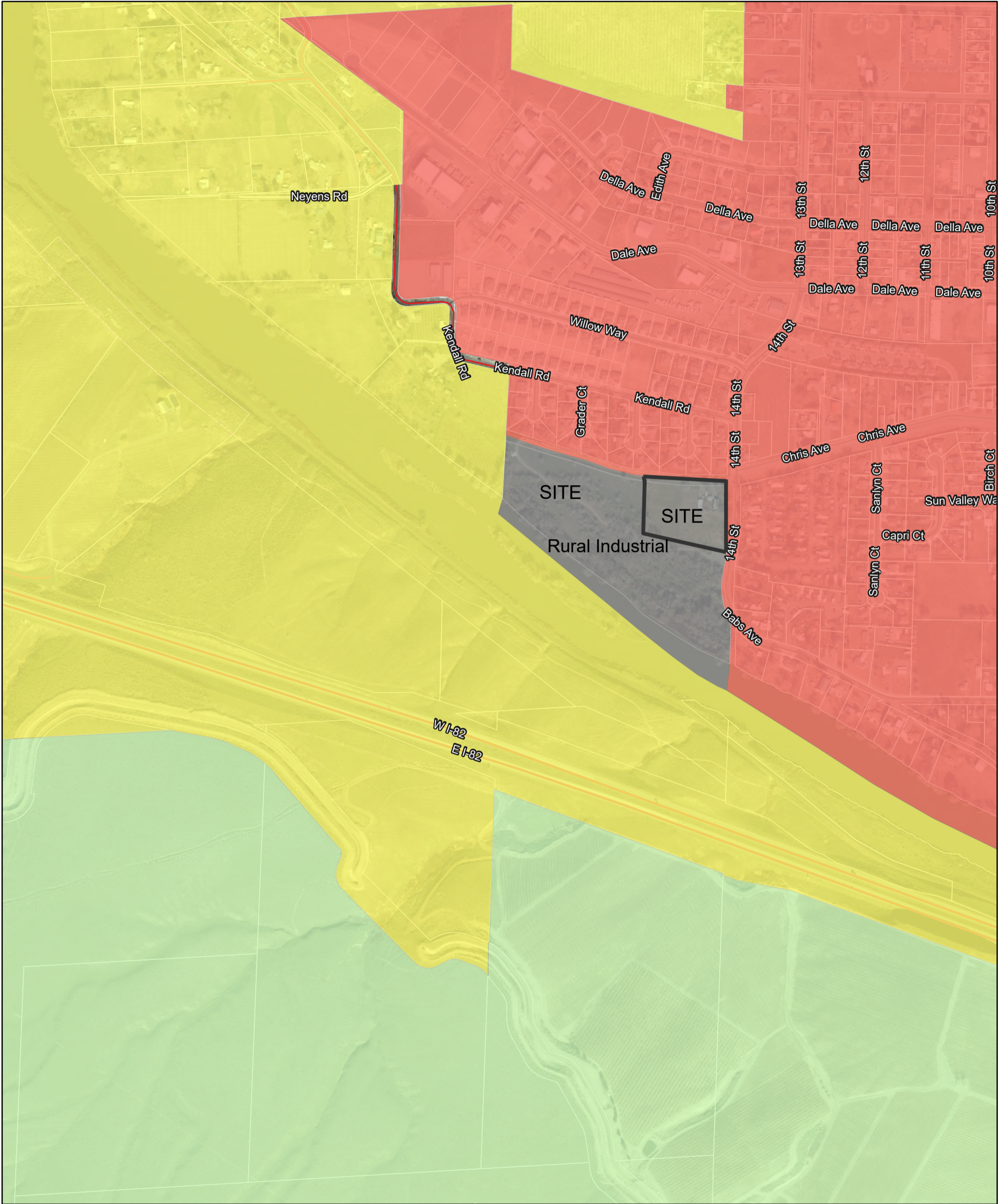
Chairman Pro Tem



**Commissioner
Constituting the Board of County
Commissioners of Benton County
Washington**



Attest 
.....
Clerk of the Board

CPA 2024-002 Current Comp Plan Designations

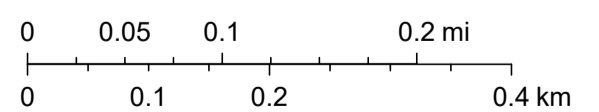


3/21/2024, 1:55:00 PM

CompPlan

- | | | |
|---|---|---|
|  GMA AG |  Access Easement |  Interstate |
|  RURAL INDUSTRIAL |  Road Centerline |  City Road |
|  RURAL REMOTE |  Paved County Road |  Parcels |
|  URBAN |  Gravel County Road |  City Limits |
| |  Private County Road |  Benton City |

1:9,028



Geophex Surveys Ltd., Maxar

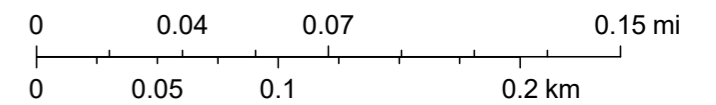
CPA 2024-002/EA 2024-002 Proposed Comp. Plan Designations



2/20/2024, 3:15:47 PM

1:4,514

- Road Centerline — Interstate Parcels
- Paved County Road City Road City Limits
- State Route Benton City



Geophex Surveys Ltd., Maxar